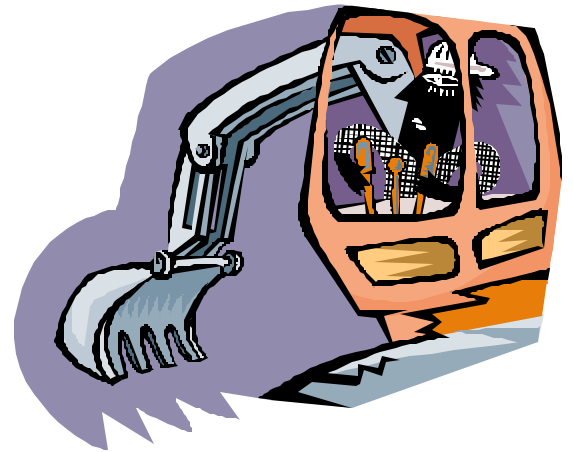


SUE Briefing

What is subsurface utility engineering (SUE)? SUE is an interdisciplinary approach to managing the risks that existing underground utilities create on projects involving excavation. Most risks are a direct result of incomplete, inaccurate or imprecise information on the location or existence of utilities. SUE utilizes new and existing technology to collect and manage utility data, and transmits this data to the right parties at the right times, in order to decrease project risks. Come join us to learn more.



- Day: September 23, 2004
- Time: 1:00 pm –5:00 pm
- Place: Hawaii Department of Transportation, Oahu District, 727 Kakoi Street, Honolulu, Large Conference Room
- The workshop is FREE
- Target Audience: Managers and Engineers that are interested in finding out more information on subsurface utility engineering
- Registration Procedure: Please contact Gail Ikeda (Hawaii LTAP) at 956-8367 or gail@eng.hawaii.edu by September 20, 2004
- For more information regarding the agenda, please contact KaiNani Kraut (FHWA) at kainani.kraut@fhwa.dot.gov or 541-2700 ext. 304